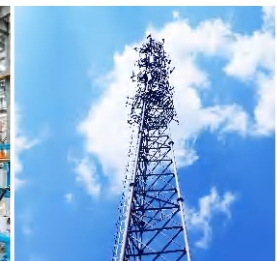


THOR

PROTECTOR OF LIGHTNING PROTECTION
– SINCE 2006 –

Catalogue Surge Protective Devices



Company Profile

THOR is a manufacturer specialised in the development and production of surge protective devices since 2006. THOR offers a complete range of SPDs, such as AC power SPD, PV system SPD, Signal and network SPD, Coaxial RF SPD, lightning rod, lightning box, etc.

THOR SPDs are applied to lightning protection in different low-voltage system fields, such as industry, solar power generation systems, telecommunications, network data centers, office buildings, and homes, etc.



Semi-automatic welding equipment

- Maintain consistent temperature of welding iron head
- Maintain consistent tin production during welding
- More precise welding positions
- Reduce false soldering caused by manual welding



Semi-automatic factory inspection pressure sensitive tester

- Accurately set the positive and negative tolerances for voltage and leakage current
- Supporting fixtures to improve testing efficiency
- If the detection data exceeds the set range, there is an alarm warning function
- MOV 100% factory inspection



Simulated lightning impact test bench (capable of meeting T2:120KA/T1:25KA)

- By simulating lightning stroke testing, the product's ability to withstand lightning current can be verified. It can guarantee the most reliable and safe high-quality products for users.



Enterprise Certificates

As a manufacturer of surge protective devices that pursues high quality, THOR invests a considerable proportion of its annual revenue in innovation, research and development, and international certification to meet the needs of customers in different fields, obtaining more and more certificates to ensure that our SPDs can be distributed in every corner of the world.



TRSS-LED Series SPD

LED Street Lights Power SPD: TRSS-LED designed for protecting LED , Driver and could be connected perfectly with its input port, sealed enclosure, waterproof and dustproof, IP67 protection grade belongs to Class III power SPD. This SPD use common mode, differential mode, full protection with leakage current and cut the overcurrent capabilities.

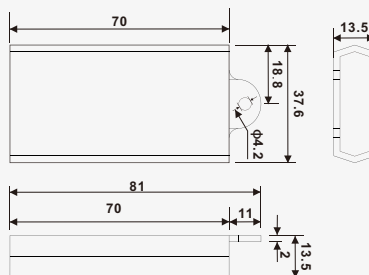
The product size small, 81x 37.6x 13.5mm (Dose not contain the connection line), using parallel wiring, attached with L, N and PE cable, very convenient in installing. TRSS-LED able to withstand voltage 20kV. the level of protection is below 1.1kV, especially good for protecting LED Street lights from lightning surge damage.

- Protect LED Street lights from lightning surge
- Convenient in installation
- Use parallel wiring, attached with L, N and PE cable
- The maximum discharge current is 10kA

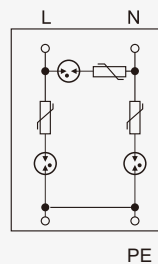
Product



Dimension



Basic circuit diagram



Parameter/Type		TRSS-LED
Rated voltage	U_n	110 – 277V AC
Max. Continuous voltage	U_c	390V AC
Nominal discharge current(8/20μs)	I_n	5KA
Max. discharge current(8/ 20μs)	I_{max}	10KA
Nominal discharge voltage	V_n	10KV
Maximum discharge voltage	V_{max}	20KV
Voltage protection level	U_p	1.1KV
Response time	t_a	< 25ns
Cross– section area		1.5mm ² flexible
Operating temperature range		–40°C~+70°C
Mounting on		Custom
Enclosure material		ABS765A
Size		81x37.6x13. 5mm
Test standards		EN 61643– 11:2012, IEC 61643– 11:2011
Fault indicator		Indicator can be option
Outer casing protection grade		IP67
Weight		57g

TRSS-LED Series SPD

LED Street Lights Power SPD: TRSS-LED designed for protecting LED , Driver and could be connected perfectly with its input port, sealed enclosure, waterproof and dustproof, IP67 protection grade belongs to Class III power SPD. This SPD use common mode, differential mode, full protection with leakage current and cut the overcurrent capabilities.

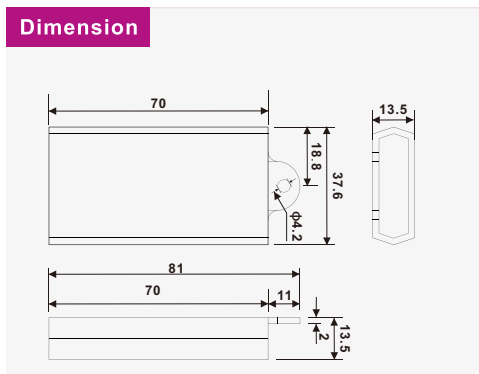
The product size small, 81x 37.6x 13.5mm (Dose not contain the connection line), using parallel wiring, attached with L, N and PE cable, very convenient in installing. TRSS-LED able to withstand voltage 20kV. the level of protection is below 1.1kV, especially good for protecting LED Street lights from lightning surge damage.

- Protect LED Street lights from lightning surge
- Convenient in installation
- Use parallel wiring, attached with L, N and PE cable
- The maximum discharge current is 10kA

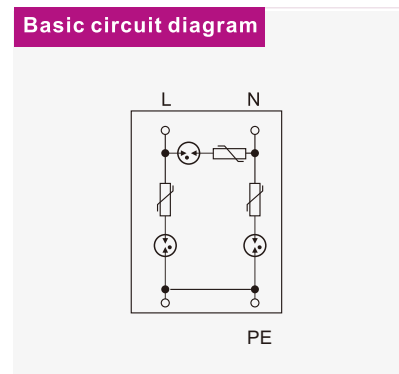
Product



Dimension



Basic circuit diagram



Parameter/Type

TRSS-LED

Rated voltage	U_n	110 – 277V AC
Max. Continuous voltage	U_c	390V AC
Nominal discharge current(8/20μs)	I_n	5KA
Max. discharge current(8/ 20μs)	I_{max}	10KA
Nominal discharge voltage	V_n	10KV
Maximum discharge voltage	V_{max}	20KV
Voltage protection level	U_p	1.1KV
Response time	t_a	< 25ns
Cross– section area		1.5mm ² flexible
Operating temperature range		–40°C~ +85°C
Mounting on		Custom
Enclosure material		ABS765A
Size		81x37.6x13. 5mm
Test standards		EN 61643– 11:2012, IEC 61643– 11:2011
Fault indicator		Indicator can be option
Outer casing protection grade		IP67
Weight		57g



Cherish resources
Be kind to the environment



Zhejiang THOR Electric Co.,Ltd

ADD: Qianyangdong Industrial Zone Yueqing

Zhejiang Province,China Post code:325604

TEL: +86-577-6267 7705

Main Web: www.thorspd.com

Sub Web : www.thore|e.com

